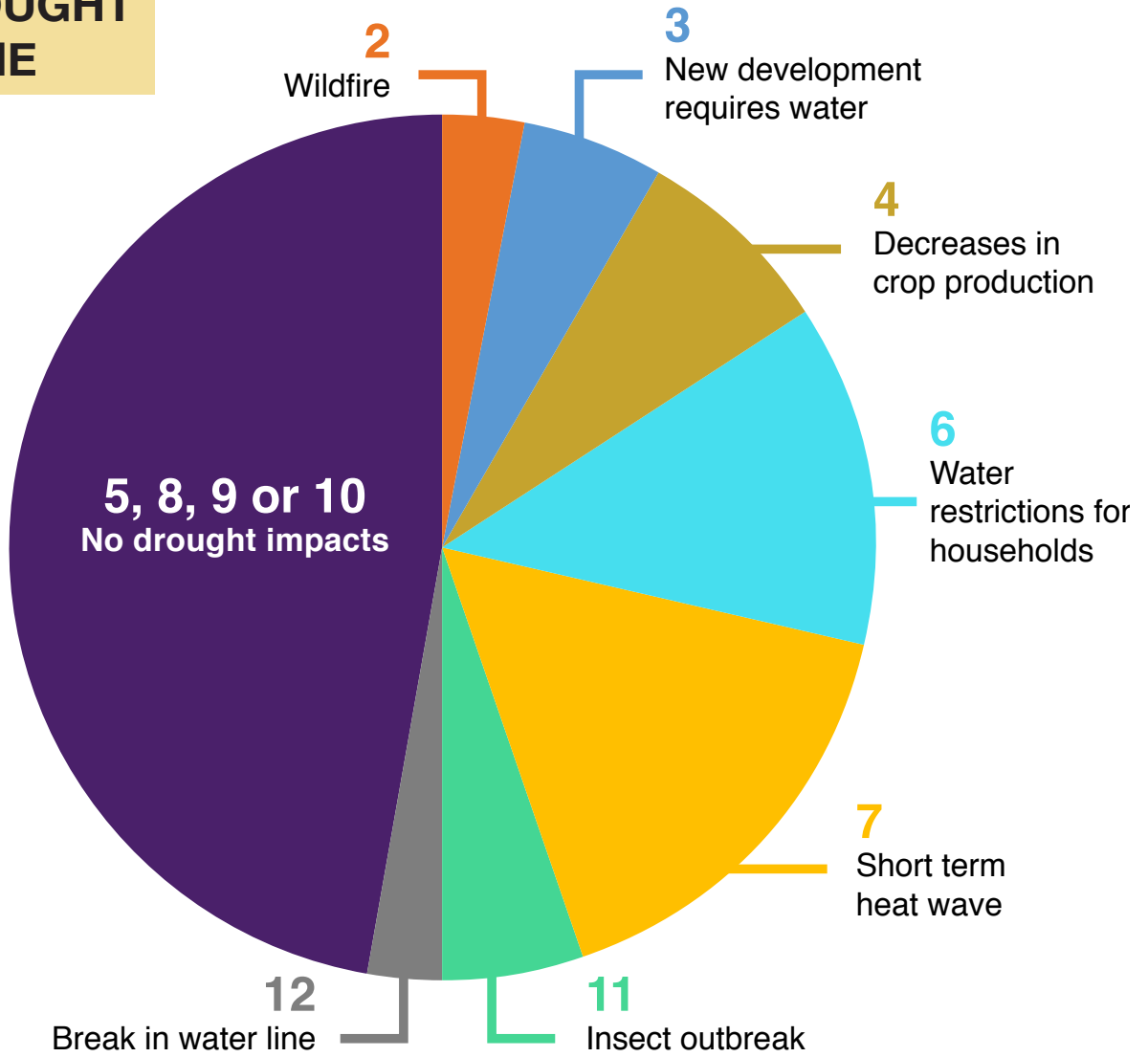




# THE DROUGHT GAME



**1**  
**Moderate drought outcomes**



ROLL	OUTCOME
<b>2</b>	<b>Wildfire outbreak in nearby forest</b> If you invested in Increased Forest Management (C), you have mitigated this outcome. If you did not, remove 5mL of water from your Reservoir.
<b>3</b>	<b>New housing development stresses water needs</b> If you invested in either Improved Water Infrastructure (D) Building a Wastewater Recycling Facility (E) or a New Storage Reservoir (G), you have mitigated this outcome. If you did not, remove 5mL of water from your Reservoir.
<b>4</b>	<b>Decrease in crop and rangeland production</b> If you invested in either Educational Outreach on Soil Health (A) or Campaign to Promote Water-Efficient Crops (H), you have mitigated this outcome. If you did not, remove 5mL of water from your Reservoir.
<b>6</b>	<b>Water restrictions for households</b> If you invested in Household Rainwater Collection Initiatives (K), you have mitigated this outcome. If you did not, remove 5mL of water from your Reservoir.
<b>7</b>	<b>Short term heat wave</b> If you invested in Direct Economic Incentives to Reduce Water Use (I), or Grants for Water-Saving Measures (K), you have mitigated this outcome. If you did not, remove 5mL of water from your Reservoir.
<b>11</b>	<b>Insect outbreak destroys crops</b> If you Invested in an Integrated Pest Management System (L), you have mitigated this outcome. If you did not, remove 5mL of water from your Reservoir.
<b>12</b>	<b>Break in main water line</b> If you Invested in Improve Water Infrastructure (D), you have mitigated this outcome. If you did not, remove 5mL of water from your Reservoir.
<b>5, 8, 9 or 10</b>	<b>NO DROUGHT IMPACTS</b> If you roll any of these numbers, you have managed to avoid drought impacts in your community for this roll.

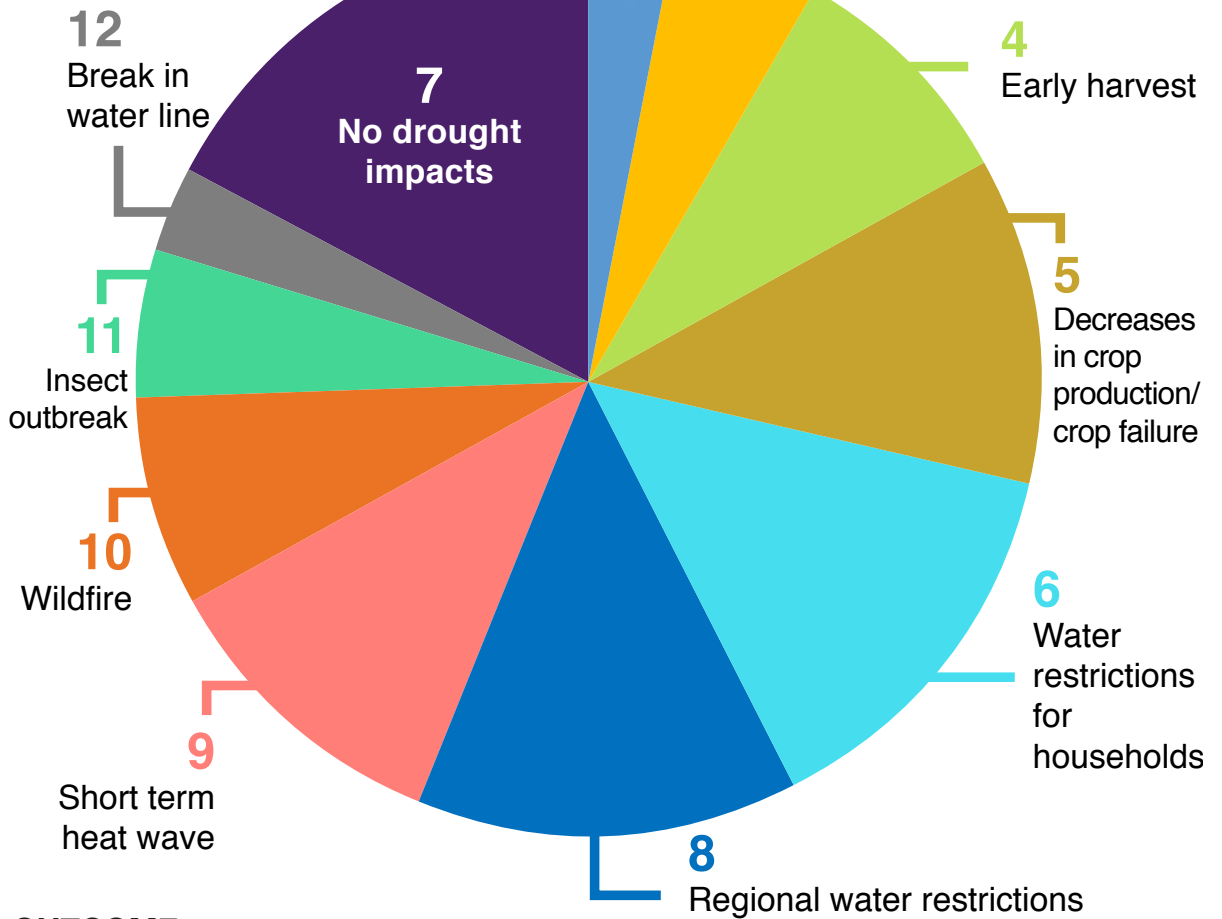


# THE DROUGHT GAME



## Severe drought outcomes

2



### ROLL

### OUTCOME

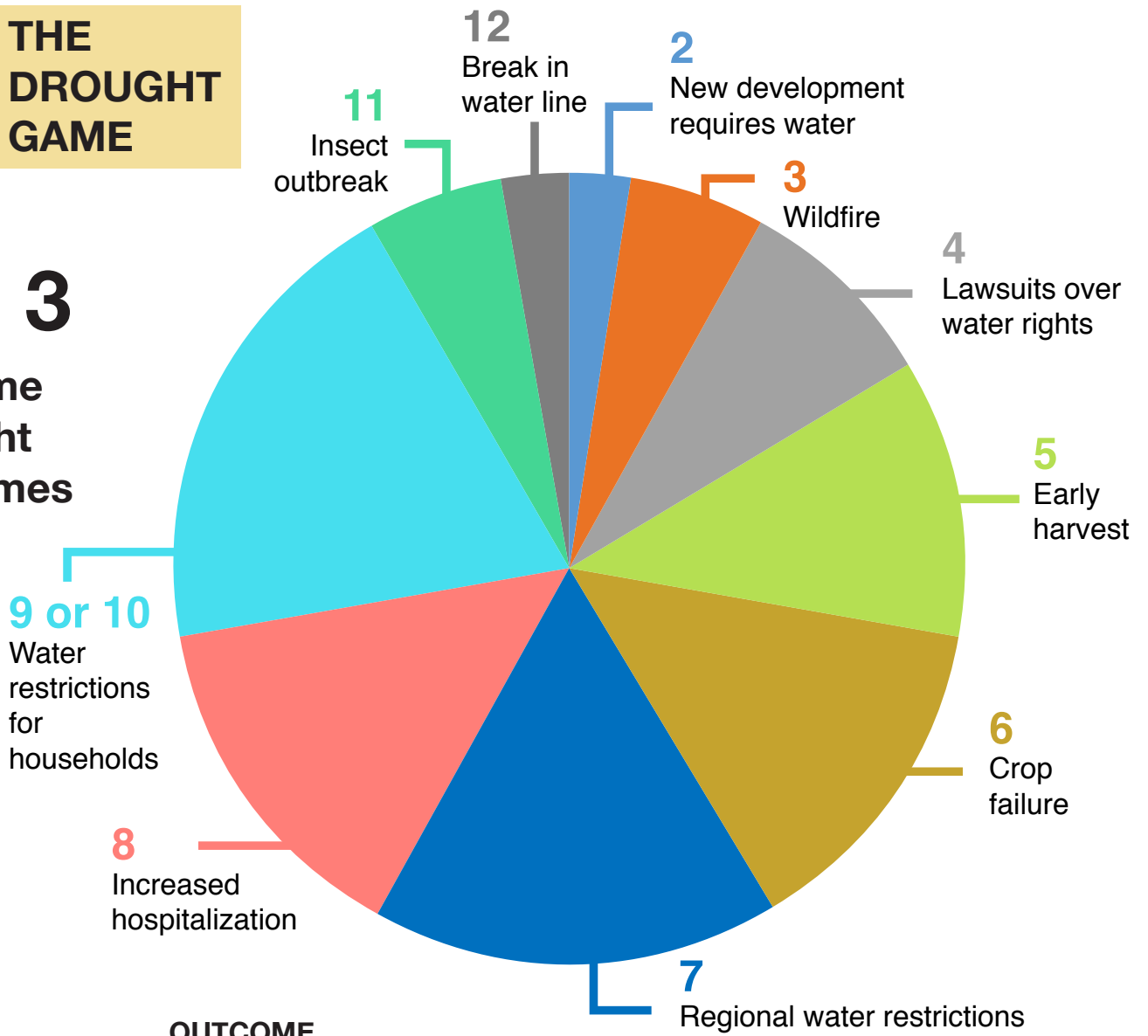
2	<b>New housing development stresses water needs</b> If you invested in either Improved Water Infrastructure (D), Building a Wastewater Recycling Facility (E), or a New Storage Reservoir (G), you have mitigated this outcome. If you did not, remove 5mL of water from your Reservoir.
3	<b>Short term heat wave</b> If you invested in Direct Economic Incentives to Reduce Water Use (I), or Grants for Water-Saving Measures (K), you have mitigated this outcome. If you did not, remove 5mL of water from your Reservoir.
4	<b>Early harvest and selling of livestock</b> If you invested in Grants to Farmers (J) or a Campaign to Promote Water-Efficient Crops (H), you have mitigated this outcome. If you did not, remove 5mL of water from your Reservoir.
5	<b>Decrease in crop and rangeland production</b> If you invested in either Educational Outreach on Soil Health (A) or Campaign to Promote Water-Efficient Crops (H), you have mitigated this outcome. If you did not, remove 5mL of water from your Reservoir.
6	<b>Water restrictions for households</b> If you invested in Household Rainwater Collection Initiatives (K), you have mitigated this outcome. If you did not, remove 10mL of water from your Reservoir.
7	<b>NO DROUGHT IMPACTS</b> You have managed to avoid drought impacts in your community for this roll.
8	<b>Regional water restrictions</b> If you invested in Building a New Storage Reservoir (G) or Building a New Wastewater Recycling Facility (E), you have mitigated this outcome. If you did not, remove 10mL of water from your Reservoir.
9	<b>Increased hospitalization for heatstroke, asthma and other drought-related health effects</b> If you invested in a Public Health Awareness Campaign (F), you have mitigated this outcome. If you did not, remove 5mL of water from your Reservoir.
10	<b>Wildfire outbreak in nearby forest</b> If you invested in Increased Forest Management (C), you have mitigated this outcome. If you did not, remove 5mL of water from your Reservoir.
11	<b>Insect outbreak destroys crops</b> If you invested in an Integrated Pest Management System (L), you have mitigated this outcome. If you did not, remove 5mL of water from your Reservoir.
12	<b>Break in main water line</b> If you invested in Improve Water Infrastructure (D), you have mitigated this outcome. If you did not, remove 5mL of water from your Reservoir.



# THE DROUGHT GAME



**3**  
Extreme drought outcomes



ROLL

OUTCOME

2	<b>New housing development stresses water needs</b> If you invested in either Improved Water Infrastructure (D), Building a Wastewater Recycling Facility (E), or a New Storage Reservoir (G), you have mitigated this outcome. If you did not, remove 5mL of water from your Reservoir.
3	<b>Wildfire outbreak in nearby forest</b> If you invested in Increased Forest Management (C), you have mitigated this outcome. If you did not, remove 5mL of water from your Reservoir.
4	<b>Lawsuits over water rights</b> If you invested in a Drought Planning Board (B), you have mitigated this outcome. If you did not, remove 5mL of water from your Reservoir.
5	<b>Early harvest and selling of livestock</b> If you invested in Grants to Farmers and Ranchers (J) you have partially mitigated the outcome; remove 5mL of water. If you invested in a Campaign to Promote Water-Efficient Crops (H), you have fully mitigated this outcome; remove no water. If you did neither, remove 10mL of water from your Reservoir.
6	<b>Crop and rangeland failure</b> If you invested in either Educational Outreach on Soil Health (A) and Campaign to Promote Water-Efficient Crops (H), you have mitigated this outcome. If you did not, remove 5mL of water from your Reservoir.
7	<b>Regional water restrictions</b> If you invested in Building a New Storage Reservoir (G) or Building a New Wastewater Recycling Facility (E), you have mitigated this outcome. If you did not, remove 10mL of water from your Reservoir.
8	<b>Increased hospitalization for heatstroke, asthma and other drought-related health effects</b> If you invested in a Public Health Awareness Campaign (F), you have mitigated this outcome. If you did not, remove 5mL of water from your Reservoir.
9 or 10	<b>Water restrictions for households</b> If you invested in Household Rainwater Collection Initiatives (K), you have mitigated this outcome. If you did not, remove 10mL of water from your Reservoir.
11	<b>Insect outbreak destroys crops</b> If you invested in an Integrated Pest Management (L), you have mitigated this outcome. If you did not, remove 10mL of water from your Reservoir.
12	<b>Break in main water line</b> If you invested in Improve Water Infrastructure (D), you have mitigated this outcome. If you did not, remove 5mL of water from your Reservoir.